



FOTO - 01



FOTO - 02

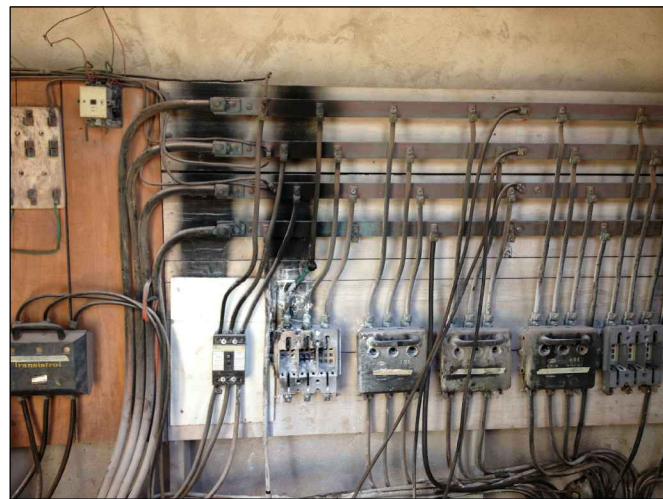


FOTO - 03



FOTO - 04



FOTO - 05



FOTO - 06

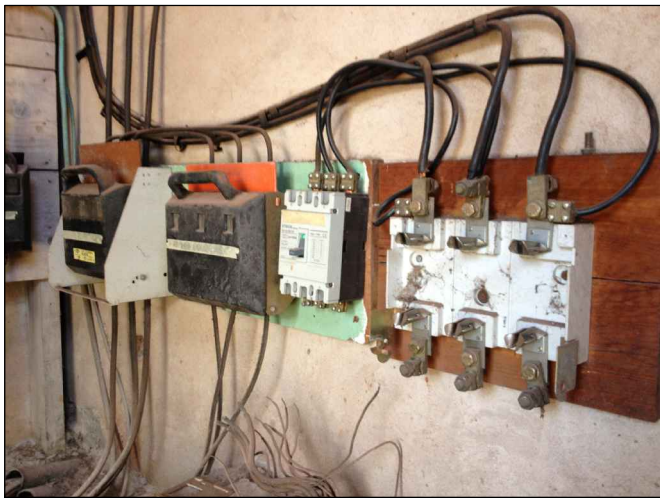


FOTO - 07

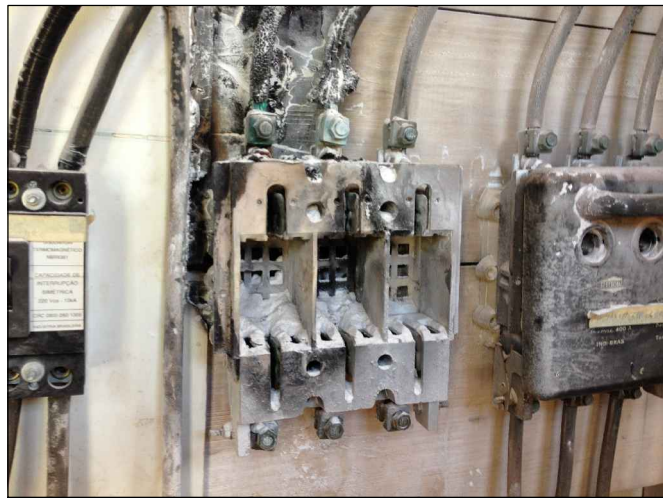


FOTO - 08



FOTO - 09

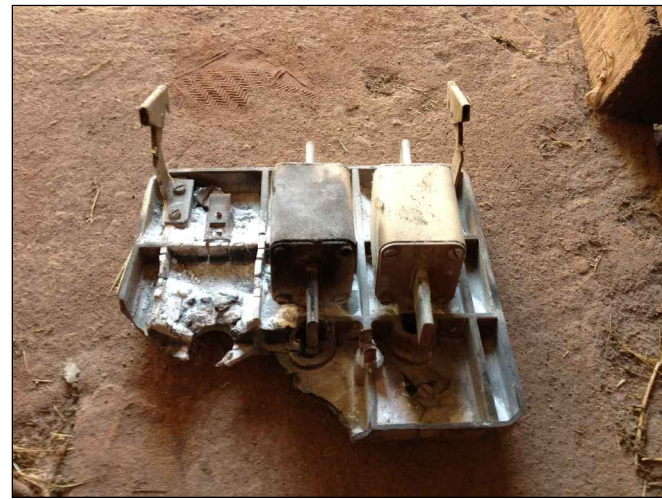


FOTO - 10



FOTO - 11



FOTO - 12



FOTO - 13



FOTO - 14

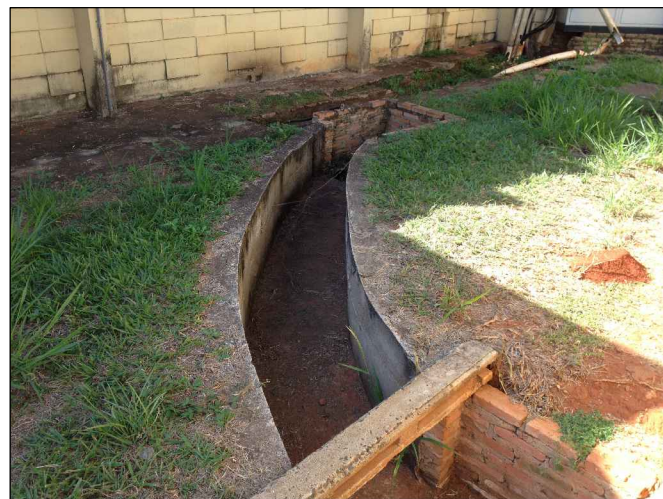


FOTO - 15



FOTO - 16



FOTO - 17

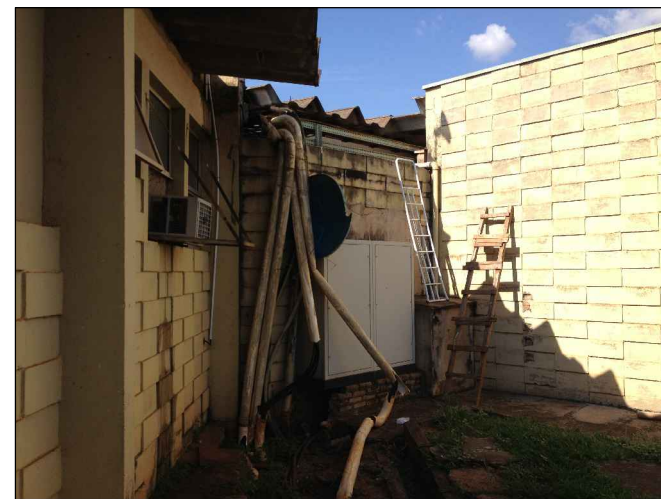


FOTO - 18

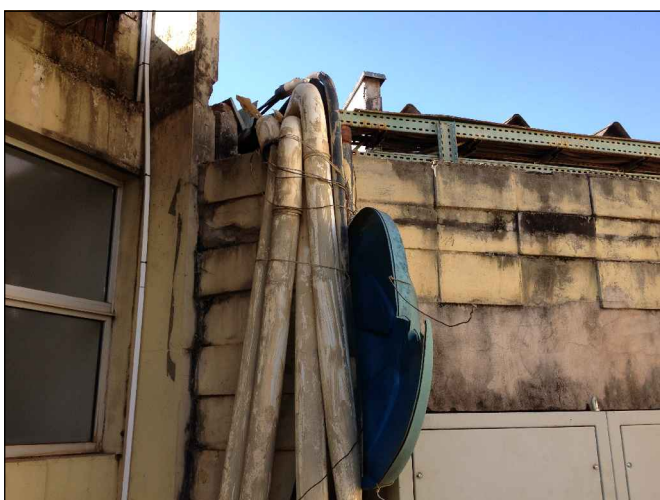


FOTO - 19

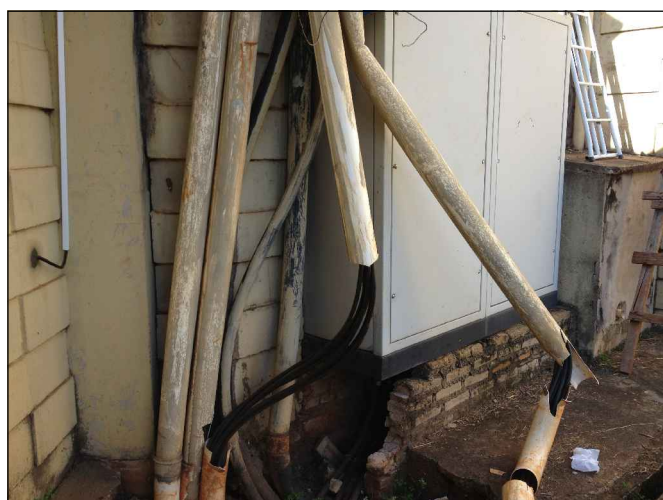


FOTO - 20

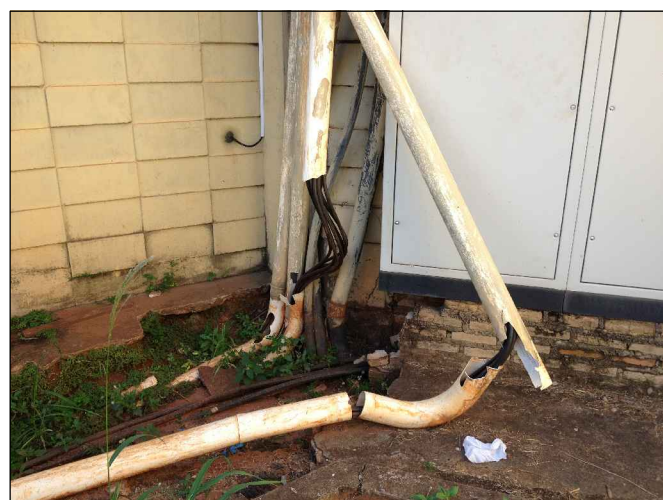


FOTO - 21

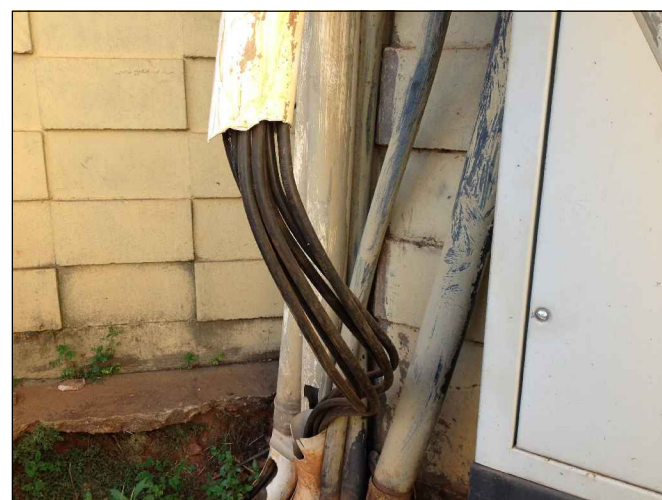


FOTO - 22



FOTO - 23

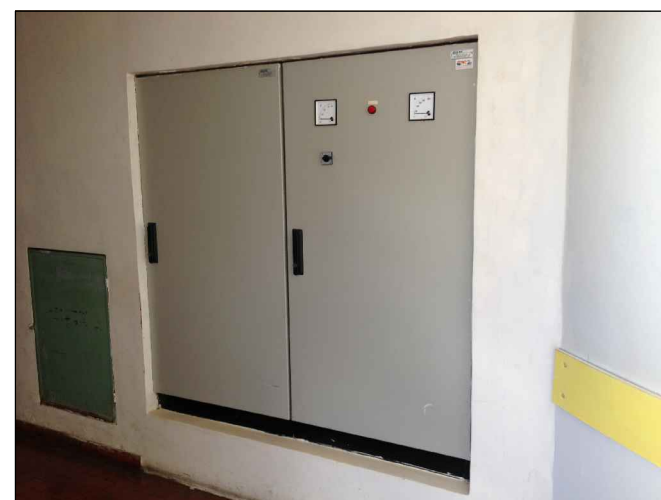


FOTO - 24



FOTO - 25

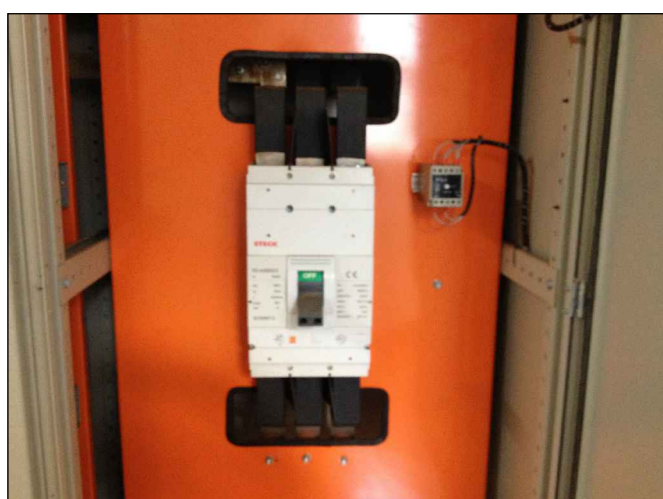


FOTO - 26



FOTO - 27



FOTO - 28



FOTO - 29



FOTO - 30

LOCAIS DAS INTERVENÇÕES


QGBT - A SER DESATIVADO
VIDE FOTOS DE 01 A 12

CANALETA EXISTENTE
VIDE FOTOS DE 13 A 16

NOVO QGBT
VIDE FOTOS DE 23 A 28

MALHA DE ATERRAMENTO
VIDE FOTOS DE 29 A 30

OBS: FOTOS DE 01 A 30
DISPOSTAS NO SENTIDO
EM QUE FORAM TIRADAS

PROJETO ELÉTRICO COMPLETO		FOLHA 03/03
Instalação do QGBT e Aterramentos no Hospital Municipal		
Prefeitura Municipal de Bebedouro		
Avenida Raul Furquim nº 2.010	14.700-000	
Jardim Julia	Bebedouro/SP	
SITUAÇÃO S/ ESCALA		FERNANDO GALVÃO MOURA PREFEITO MUNICIPAL C.P.F. 108.904.508-41
OBSERVAÇÕES		DR. EURICO MEDEIROS JUNIOR DIRETOR DEPTO MUNICIPAL DE SAÚDE
CPFL:	Aprovação:	AUTOR DO PROJETO E RESPONSÁVEL TÉCNICO
Desenho:	Data:	
JPaulo	12/06/2014	ENGº JOSÉ PAULO ROSSANEZI CREA: 048.902.991-0
 Prefeitura Municipal de Bebedouro		